

RUNNER PEPPER GEL WITH LED ADJUSTABLE HAND STRAP



P-22J-LED-04

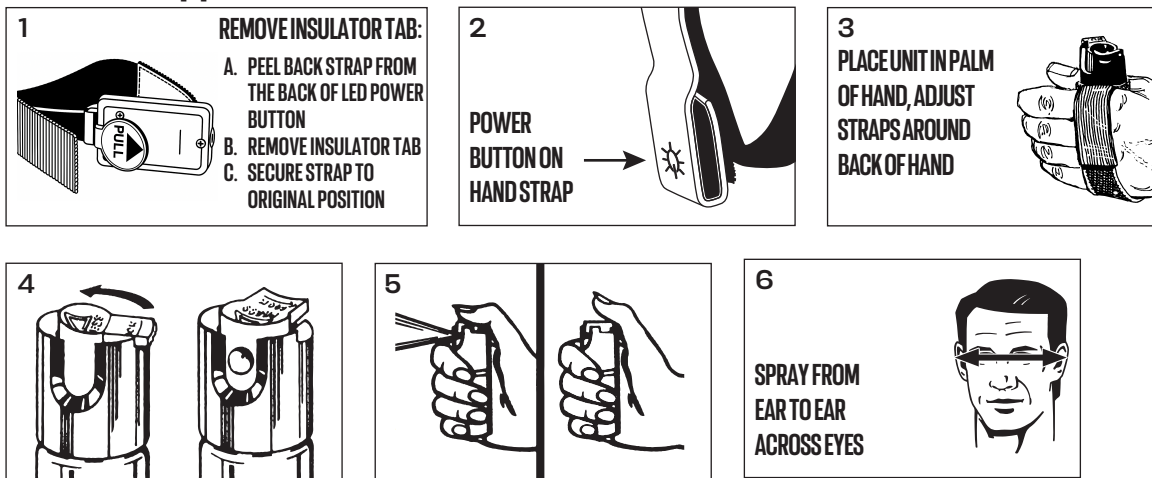
What does SABRE® Pepper Gel do?

- May cause involuntary eye closure, difficulty breathing, facial burning, psychological symptoms (fear, anxiety & panic), more at sabrered.com/effects.

When should I use my SABRE Pepper Gel?

- Carry it with you at all times (Where Permitted)!
- Practice with a SABRE Practice Spray to increase familiarity .
- Test your SABRE Pepper Gel upon purchase & semi-annually with a quick burst onto the ground.
- Deploy when you feel your safety is in jeopardy or you are attacked, then escape and call the police immediately. Do not try to capture your attacker.
- Replace your Pepper Gel after using on an attacker.

Runner Pepper Gel



How do I use my SABRE Pepper Gel?

1. Unlock safety mechanism (see 4 above).
2. Grip with your thumb on the CENTER of the actuator.
3. Press down on the actuator where it says "Press".
4. Spray from ear to ear across the eyes. A stream will reach up to 12-16ft (3m-4.75m) in front of you.
5. Shield face when firing into the wind.
6. Release pressure to stop firing.

How do I use my LED Adjustable Hand Strap?

1. Uncover the battery unit on underside of band, located on the same side as the power button. Pull the insulator tab from the battery compartment to activate the battery.
Note: Loosen the screws if tab is difficult to remove. Remove tab and tighten screws to secure.
2. To use the light in 'steady' mode press the power button once (see 2 above). Press the power button again for flashing mode. Press a third time to turn off the light.
3. To adjust hand strap, place pepper gel holder in palm of hand. Adjust straps around the back of hand.

REPLACING THE BATTERY

1. Uncover the battery unit on underside of band, located on the same side as the power button. Pull battery/LED light unit out slightly to access battery.
2. Unscrew the three screws and remove the battery housing.
3. Use the edge of your fingernail to push the battery out of the compartment and safely dispose of used battery.
4. Slide new 3V CR2032 battery into the compartment, noting the polarity is correct.
Place the battery housing around the battery component and tighten the three screws.
5. Slide the battery/LED light unit completely back into fabric band and ensure battery unit is covered by securing the strap.

BATTERY WARNING:

- Battery Type: 1 x 3V CR2032
- Remove and immediately recycle or dispose of used batteries according to local regulations and **KEEP AWAY FROM CHILDREN**.
- Do **NOT** dispose of batteries in household trash or incinerate.
- Even used batteries may cause severe injury or death.
- Call a local poison control center for treatment information.
- Non-rechargeable batteries are not to be recharged.
- Do **NOT** force discharge, recharge, disassemble, heat above 60°C (140°F) or incinerate. Doing so may result in injury due to venting, leakage or explosion resulting in chemical burns.
- Ensure the batteries are installed correctly according to polarity (+ and -).
- Do **NOT** mix old and new batteries, different brands or types of batteries, such as alkaline, carbon-zinc, or rechargeable batteries.
- Remove and immediately recycle or dispose of batteries from equipment not used for an extended period of time according to local regulations.
- Always completely secure the battery compartment. If the battery compartment does not close securely, stop using the product, remove the batteries, and keep them away from children.

CLEANING INSTRUCTIONS:

1. To clean the LED Adjustable Hand Strap, first remove the pepper canister from the elastic strap.
2. Remove the battery and clear silicone strap from the neon yellow side.
3. Hand wash and hang to dry. **DO NOT** put in dryer.

FCC COMPLIANCE STATEMENT:

This device complies with part 15 of the FCC Rules. Operation is subject to the following two conditions: (1) This device may not cause harmful interference, and (2) this device must accept any interference received, including interference that may cause undesired operation.

WARNING: Changes or modifications not expressly approved by the party responsible for compliance could void the user's authority to operate the equipment.

NOTE: This equipment has been tested and found to comply with the limits for a Class B digital device, pursuant to part 15 of the FCC Rules. These limits are designed to provide reasonable protection against harmful interference in a residential installation. This equipment generates, uses and can radiate radio frequency energy and, if not installed and used in accordance with the instructions, may cause harmful interference to radio communications. However, there is no guarantee that interference will not occur in a particular installation. If this equipment does cause harmful interference to radio or television reception, which can be determined by turning the equipment off and on, the user is encouraged to try to correct the interference by one or more of the following measures:

- Reorient or relocate the receiving antenna.
- Increase the separation between the equipment and receiver.
- Connect the equipment into an outlet on a circuit different from that to which the receiver is connected.
- Consult the dealer or an experienced radio/TV technician for help.

WARNING

- **INGESTION HAZARD:** this product contains a button cell or coin battery.
- **DEATH** or serious injury can occur if ingested.
- A swallowed button cell or coin battery can cause **Internal Chemical Burns** in as little as **2 hours**.
- **KEEP** new and used batteries **OUT OF REACH OF CHILDREN**.
- **Seek immediate medical attention** if a battery is suspected to be swallowed or inserted inside any part of the body.



⚠ WARNING

SEVERE IRRITANT. CONTENTS UNDER PRESSURE. AVOID CONTACT WITH YOUR SKIN, EYES AND MOUTH. KEEP OUT OF THE REACH OF CHILDREN.

FIRST AID: In case of eye contact, carefully remove & discard contact lenses. Flush eyes with cold water for 15 minutes. **DO NOT** rub eyes. Get prompt medical attention. In case of skin contact, remove contaminated clothing. Flush skin 15-20 minutes with soap & cold water. Repeat as necessary. **DO NOT** use creams, salves, or oils. Seek medical attention if symptoms persist. **DO NOT PUNCTURE OR INCINERATE CONTAINER. DO NOT LEAVE YOUR SABRE PEPPER SPRAY IN ANY AREA THAT MAY EXCEED 120 ° F (48.88° C) OR DROP BELOW 32° F (0° C). EXCESSIVE HEAT OR COLD MAY CAUSE THE CAN TO LEAK OR BURST. DO NOT STORE YOUR SABRE PEPPER SPRAY IN YOUR VEHICLE. HANDLE WITH CARE. DO NOT USE AFTER EXPIRATION DATE ON DEVICE.**

FOR SELF-DEFENSE ONLY. The use of this substance or device for any purpose other than self defense is a crime under the law. Illegal use of this unit is punishable by imprisonment, fines or both. Not to be purchased or possessed by minors, felons, anyone addicted to narcotics or where prohibited by law.

N.Y. - This device shall not be sold by anyone other than a licensed or authorized dealer. Violators may be prosecuted under the law. **FAA** regulates carrying self-defense sprays on airplanes. Must not exceed 118 mL (4 fluid ounces) by volume, and must be in checked baggage. Certain airlines may have their own restrictions, check with your carrier before flight. International flights prohibit self-defense sprays in both carry on and checked luggage. See **FAA** regulations for more details. Contents are dangerous - use with care. Prior to use, you **MUST** read & watch the warnings & instructions at www.sabrered.com/safetytips. **NO** personal safety product, including this product can guarantee your safety in an attack. Failure to use properly could result in the inability to stop an assailant. Use counter measures if necessary.

LIMITED WARRANTY: The LED ADJUSTABLE HAND STRAP is covered under a 1-year limited warranty from the date of purchase. Proof of purchase, registration, and return authorization is required. You must register your device at <https://www.sabrered.com/product-warranty/>. **LIMITED WARRANTY:** If this pepper spray/gel product fails to work at any time before its expiration date due to a manufacturing defect, return it to Security Equipment Corporation for a replacement. Return authorization is required. Contact CustomerSupport@SabreRed.com. The warranty does not cover products which have been abused, altered, or damaged. **TO THE EXTENT PERMITTED BY LAW, SECURITY EQUIPMENT CORPORATION DISCLAIMS ALL OTHER IMPLIED OR EXPRESS WARRANTIES OF MERCHANTABILITY AND/OR FITNESS FOR A PARTICULAR PURPOSE. LIMITATION OF LIABILITY:** This limited warranty is your sole remedy and SECURITY EQUIPMENT CORPORATION shall not be liable for any damages, whether direct, indirect, incidental, special, consequential, exemplary, or otherwise, including lost revenues and lost profits, arising out of any theory of recovery, including statutory, contract or tort. In no event will SECURITY EQUIPMENT CORPORATION'S entire liability exceed the purchase price of this product. Some states and provinces do not allow the exclusion or limitations of incidental or consequential damages so the above limitations or exclusions may not apply to you. This limited warranty gives you specific legal rights, and you may also have other rights which vary from state to state and province to province.

LIMITATION OF LIABILITY: This limited warranty is your sole remedy and SECURITY EQUIPMENT CORPORATION shall not be liable for any damages, whether direct, indirect, incidental, special, consequential, exemplary or otherwise, including lost revenues and lost profits, arising out of any theory of recovery, including statutory, contract or tort. In no event will SECURITY EQUIPMENT CORPORATION'S entire liability exceed the purchase price of this product. Some states and provinces do not allow the exclusion or limitations of incidental or consequential damages so the above limitations or exclusions may not apply to you. This limited warranty gives you specific legal rights, and you may also have other rights which vary from state to state and province to province.

CUSTOMER SERVICE CONTACT

SABRE® Security Equipment Corporation
815 Sun Park Drive
Fenton, MO 63026
customersupport@sabrered.com
Phone: 636-343-0200
Toll Free: 800-325-9568



MADE IN INDIA
10/13/2025