

PEPPER SPRAY WITH LIPSTICK DESIGN

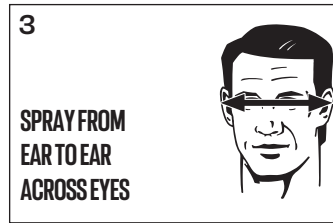
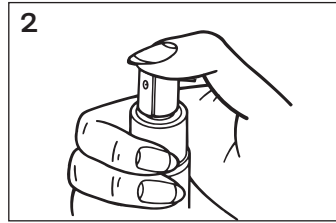
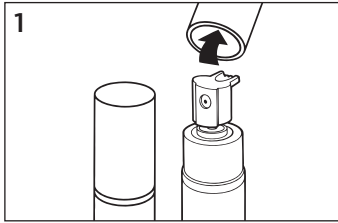
MANUAL

LS-22-US



What does SABRE® Pepper Spray do?

- May cause involuntary eye closure, difficulty breathing, facial burning, psychological symptoms (fear, anxiety & panic), more at sabrered.com/effects.



How do I use my SABRE® Pepper Spray?

1. Remove cap (see 1 above).
2. Grip with your thumb on the CENTER of the actuator (see 2 above).
3. Press down on the actuator where it says "Press".
4. Spray from ear to ear across the eyes. A stream will reach up to 10ft (3m) in front of you.
5. Shield face when firing into the wind.
6. Release pressure to stop firing.
7. Sidestep and escape to safety.

When should I use my SABRE® Pepper Spray?

- Carry it at all times, where permitted.
- Practice with a SABRE® Practice Spray to get comfortable and confident.
- Test your SABRE® Pepper Spray upon purchase & semi-annually with a quick burst onto the ground.
- Deploy when you feel your safety is in jeopardy or you are attacked, then escape and call the police immediately.
- Do not try to capture your attacker.
- Replace your Pepper Spray after using on an attacker.

⚠ WARNING

SEVERE IRRITANT. CONTENTS UNDER PRESSURE. AVOID CONTACT WITH YOUR SKIN, EYES AND MOUTH. KEEP OUT OF THE REACH OF CHILDREN.

FIRST AID: In case of eye contact, carefully remove & discard contact lenses. Flush eyes with cold water for 15 minutes. DO NOT rub eyes. Get prompt medical attention. In case of skin contact, remove contaminated clothing. Flush skin 15-20 minutes with soap & cold water. Repeat as necessary. DO NOT use creams, salves, or oils. Seek medical attention if symptoms persist. **DO NOT PUNCTURE OR INCINERATE CONTAINER. DO NOT EXPOSE TO HEAT OR STORE AT TEMPERATURES ABOVE 120°F (50°C). HANDLE WITH CARE. DO NOT USE AFTER EXPIRATION DATE ON DEVICE.**

FOR SELF-DEFENSE ONLY. The use of this substance or device for any purpose other than self defense is a crime under the law. Illegal use of this unit is punishable by imprisonment, fines or both. Not to be purchased or possessed by minors, felons, anyone addicted to narcotics or where prohibited by law.

N.Y. - This device shall not be sold by anyone other than a licensed or authorized dealer. Violators may be prosecuted under the law. **FAA** regulates carrying self-defense sprays on airplanes; must be in checked baggage.

Contents are dangerous - use with care.

Prior to use, you **MUST** read & watch the warnings & instructions at www.sabrered.com/safetytips. **NO** personal safety product, including this product can guarantee your safety in an attack. Failure to use properly could result in the inability to stop an assailant. Use counter measures if necessary.

LIMITED WARRANTY: The PEPPER SPRAY WITH LIPSTICK DESIGN is covered under a limited warranty through expiration date. Return authorization is required. **LIMITED WARRANTY:** If this product fails to work at any time before its expiration date due to a manufacturing defect, return it to Security Equipment Corporation for a replacement. This warranty does not cover products which have been abused, misused, altered or damaged. **TO THE EXTENT PERMITTED BY LAW, SECURITY EQUIPMENT CORPORATION DISCLAIMS ALL OTHER IMPLIED OR EXPRESSED WARRANTIES OF MERCHANTABILITY AND/OR FITNESS FOR A PARTICULAR PURPOSE.**

LIMITATION OF LIABILITY: This limited warranty is your sole remedy and SECURITY EQUIPMENT CORPORATION shall not be liable for any damages, whether direct, indirect, incidental, special, consequential, exemplary or otherwise, including lost revenues and lost profits, arising out of any theory of recovery, including statutory, contract or tort. In no event will SECURITY EQUIPMENT CORPORATION'S entire liability exceed the purchase price of this product. Some states and provinces do not allow the exclusion or limitations of incidental or consequential damages so the above limitations or exclusions may not apply to you. This limited warranty gives you specific legal rights, and you may also have other rights which vary from state to state and province to province.

CUSTOMER SERVICE CONTACT

SABRE® Security Equipment Corporation
815 Sun Park Drive
Fenton, MO 63026
customersupport@sabred.com
Phone: 636-343-0200
Toll Free: 800-325-9568

SPRAY MADE IN USA
8/26/2025