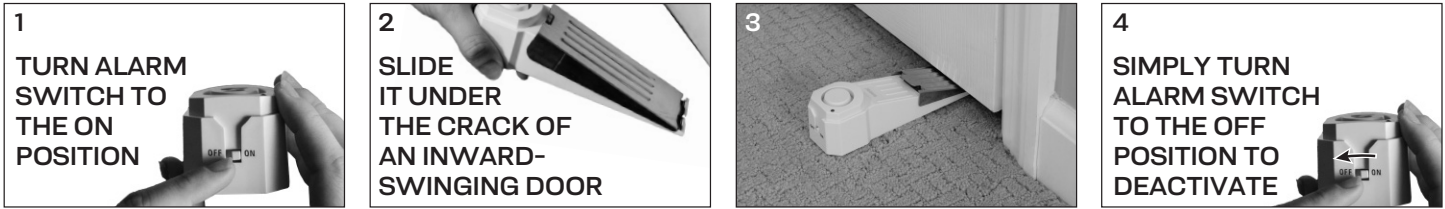


What does the SABRE® Door Stop Alarm do?

- The Door Stop Alarm with Continuous Alert blocks inward opening door. Wedge design & non-skid grip prevents access. Features a powerful 120 dB siren.

How to Install



Indoor Use Only – DO NOT Use in Wet Conditions

- Ideal for use in bedrooms, dorms, hotels and apartments
- 120 dB alarm sounds when alarm is activated
- On-Off switch activates and deactivates alarm
- Low-battery indicator light

BATTERY INSTALLATION

The door stop alarm requires one 9V battery. When the low battery indicator illuminates the battery needs to be replaced.

1. Toggle On/Off switch to the 'OFF' position to prevent unintentional triggering.
2. To access the battery compartment, remove the screw on the battery compartment cover on the underside of the door stop.
3. Fit 9V battery to the connecting leaf, making sure the terminal polarities are correct.
4. Replace cover and screw.

CAUTION: Batteries may leak harmful liquids or ignitable materials or explode causing injury and product damage.

- Do not mix old and new batteries or other battery types
- Replace all batteries at the same time
- Replace fully discharged batteries immediately

IMPORTANT: Remove batteries before storing the alarm for extended periods. Batteries corrode over time and may cause permanent damage to the unit. Depleted batteries should be removed from the unit and disposed of properly.

TESTING THE ALARM

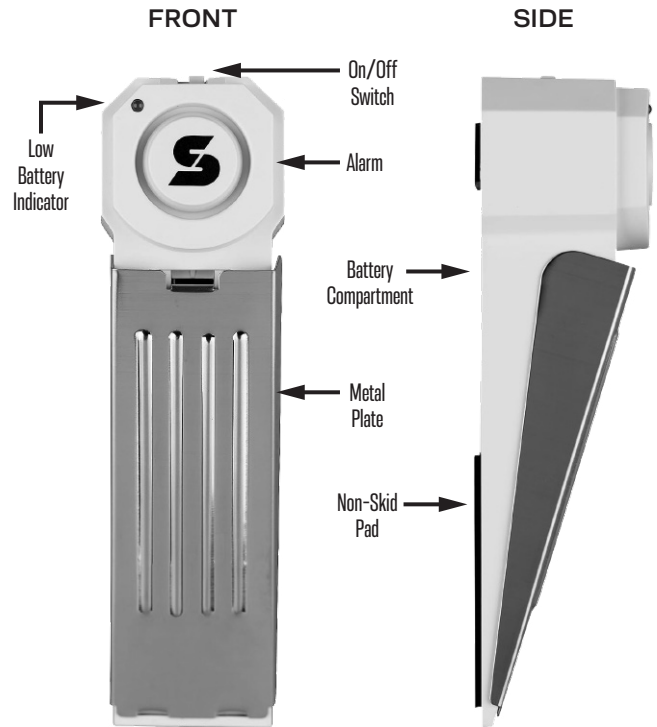
1. Toggle the On/Off switch to 'ON'.
2. Quickly but firmly tap down and release the metal plate on the cover unit. The alarm will sound, indicating proper operation.

NOTE: The palm of your hand can be used to cover the alarm to reduce risk of hearing damage.

3. Toggle the On/Off switch to 'OFF'.

INSTALLATION

Insert door wedge at the base of the door as shown number 3 above with the pointed edge under the door gap. The gap between the bottom of the door and the floor should be between 0.3" to 1.25" (8mm to 32mm) for proper alarm operation.



SPECIFICATIONS

Door Types	Inward-swinging doors with gap between 0.3" and 1.25"
Size	6.4" length x 2" width x 1.5" height (162.5 mm length x 50.8 mm width x 38.1 mm height)
Alarm Distance	Up to 1,500 ft (457 m)
Alarm Sound Level	120 dB
Features	<ul style="list-style-type: none"> • Non-skid pad • Low battery indicator

The alarm is properly installed if the metal contact plate is depressed when the door is opened and the alarm sounds. Make sure the non-skid pads on the bottom of the alarm are in firm contact with the floor.

OPERATION

1. Toggle the On/Off switch to 'ON' to activate alarm. Once activated, the alarm will continue to sound until it is deactivated, or the battery is exhausted.
2. Toggle the On/Off switch to 'OFF' to deactivate alarm.

⚠ WARNING

- **NOT** suitable for children under 3 years, because small parts could be swallowed.
- **Prolonged exposure to alarm siren may cause permanent hearing loss.**
- Prior to use, you **MUST** read & watch the warnings & instructions at sabre.red.com/safetytips.
- A properly installed and maintained security product may **ONLY** reduce the risk of events such as burglary, robbery, break-ins. It is **NOT** insurance or a guarantee that such events will not occur, that adequate warning or protection will be provided, or that there will be no personal injury, death, and/ or property damage as a result.
- **BATTERY WARNING:** Do not install backwards, charge, put in fire, or mix with other battery types as it may explode or leak causing injury.

90 DAY LIMITED WARRANTY: Security Equipment Corporation warrants this product to be free from manufacturing defects for a period of ninety days from the original date of consumer purchase. This warranty is limited to the repair or replacement of this product only and does not extend to consequential or incidental damage to other products that may be used with this unit. This warranty does not cover products which have been abused, altered or damaged. This warranty is in lieu of all other warranties express or implied. **TO THE EXTENT PERMITTED BY LAW, SEC DISCLAIMS ALL OTHER IMPLIED OR EXPRESS WARRANTIES, INCLUDING THE WARRANTY OF MERCHANTABILITY AND/OR FITNESS FOR A PARTICULAR PURPOSE.**

LIMITATIONS OF LIABILITY: This limited warranty is your sole remedy and SEC shall not be liable for any damages, whether direct, indirect, incidental, special, consequential, exemplary or otherwise, including lost revenue and lost profits, arising out of any theory of recover, including statutory, contract or tort. In no event will SEC's entire liability exceed the purchase price of this product. Some states and provinces do not allow the exclusion or limitations on how long an implied warranty lasts or permit the exclusion or limitations of incidental or consequential damages, so the above limitations or exclusions may not apply to you. This limited warranty gives you specific legal rights, and you may also have other rights which vary from state to state and province to province.

If unit should prove defective within the warranty period, return prepaid with dated proof of purchase to:
Security Equipment Corporation
747 Sun Park Drive
Fenton, MO 63026